

## Temperature Compensated Crystal Oscillator (TCXO )

**TG-5021CE 26 MHz**

- Reflowable and high density mounting type ultra small size SMD (3.2×2.5×0.9 mm).
- Using the heat-resisting type AT cut quartz crystal  
allows almost the same temperature soldering as universal SMD IC.
- Operating supply voltage : 3.0 V.

---

**■ Specifications**

## 1. Absolute maximum ratings

Parameter	Symbol	Value	Unit	Note
Supply voltage	V <sub>CC-GND</sub>	-0.3 to 4.5	V	
Storage temperature range	T <sub>STG</sub>	-40 to +85	°C	

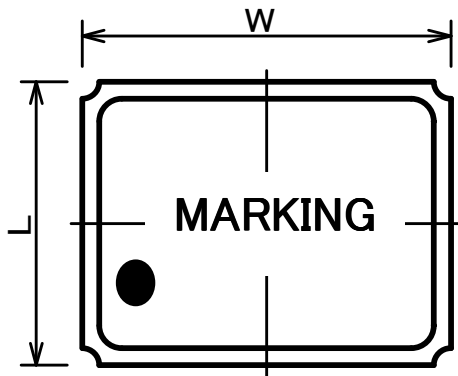
## 2. Operating range

Parameter	Symbol	Value			Unit	Note
		Min.	Typ.	Max.		
Power voltage	V <sub>CC</sub>	2.70	3.00	3.30	V	V <sub>CC</sub> =3.0V±10%
Operating temperature range	T <sub>use</sub>	-40	+25	+85	°C	
Output load	Load <sub>R</sub>	9	10	11	kΩ	
	Load <sub>C</sub>	9	10	11	pF	
DC-cut capacitor	C <sub>C</sub>	0.01			μF	

DC-cut capacitor is not included in our TCXO. Please insert DC-cut capacitor in output line.

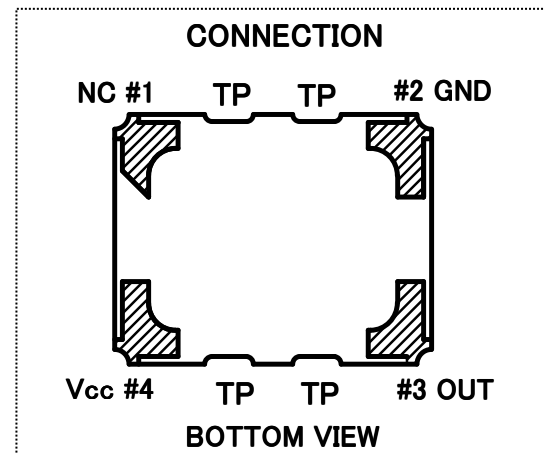
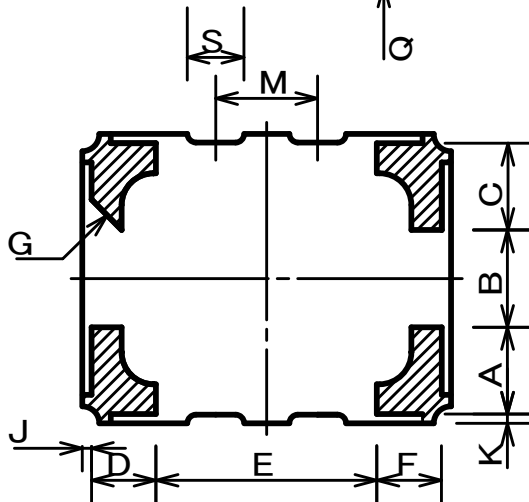
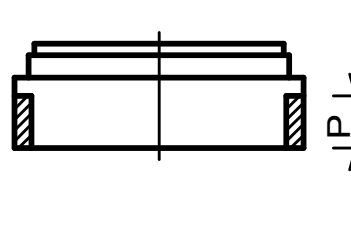
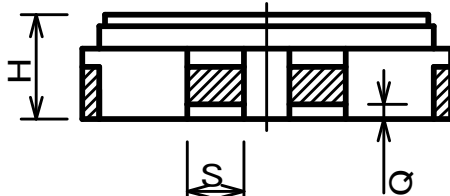


5. OUTLINE DRAWING



Marking  
TBD

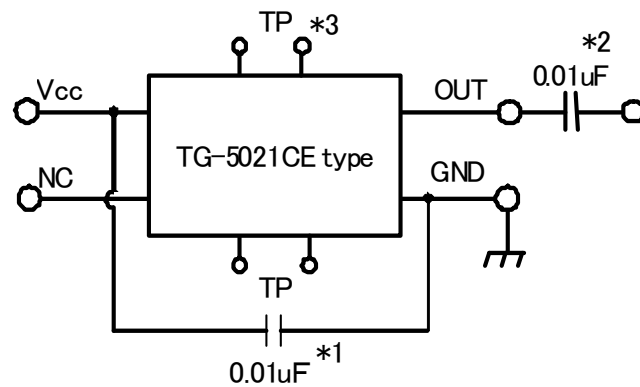
Material  
Ceramics (base)  
Au coated nickel (terminal)  
Fe-Ni-Co (lid)



(unit : mm)

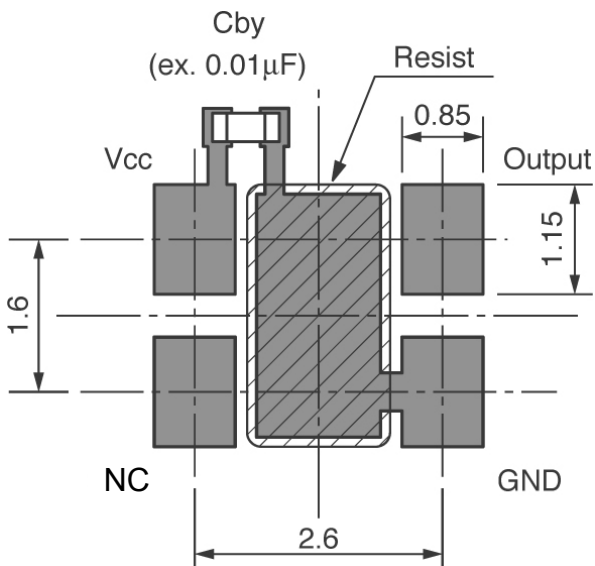
DIM.	MIN.	TYP.	MAX.	DIM.	MIN.	TYP.	MAX.
W	3.00	3.20	3.40	F	—	0.57	—
L	2.30	2.50	2.70	G	—	C 0.27	—
H	0.80	0.90	1.00	J	—	0.08	—
A	—	0.765	—	K	—	0.08	—
B	0.76	0.86	0.96	M	0.80	0.90	1.00
C	—	0.765	—	P	0.41	0.46	0.51
D	—	0.57	—	Q	—	0.13	—
E	1.85	1.95	2.05	S	0.40	0.50	0.60

## 6. CONNECTION



- \*1 Please connect capacitor(recommendation:0.01  $\mu$  F) between "Vcc" and "GND" terminal.
- \*2 Please connect capacitor(recommendation:0.01  $\mu$  F) between "OUT" terminal and load.
- \*3 Do not connect "TP" terminal.
- \*4 This product has one chip LSI. Do not supply over +4.5V or negative voltage under  $-0.3$ V to "Vcc" terminal. Do not supply over  $V_{cc}+0.3$ V or negative voltage under  $-0.3$ V to "NC" terminal. Do not supply any voltages to "OUT" terminal.
- \*5 Do not supply any voltages in any way which differs from the above connection figure.
- \*6 As for the terminal NC, the connection with GND is also possible.

## 7. Recommended soldering pattern



Except for this recommended soldering pattern, please contact us for inquiries.

**Confidential**

Until: **Permanent**