

SPECIFICATION FOR APPROVAL

CN: 1611041317

CUSTOMER : _____

PRODUCT TYPE : SMD SEAM SEALING X'TAL 3.2×2.5

NOMINAL FREQ. : 26.000000MHz

TXC P/N : AM26000305

REVISION : S1

CUSTOMER P/N : _____

PM / SALES : _____

DATE : _____

CUSTOMER CONFIRMATION : _____
(Singnature)

_____ (Date)

MSL:Level 1
RoHS Compliant

(for glass crystal only : Pb used in sealing glass material is exempt from EU directive)

SPECIFICATION FOR APPROVAL

CN: 1611041317

| | | |
|---------------|---|--------------------------------|
| PRODUCT TYPE | : | SMD SEAM SEALING X'TAL 3.2×2.5 |
| <hr/> | | |
| NOMINAL FREQ. | : | 26.000000MHz |
| <hr/> | | |
| TXC P/N | : | AM26000305 |
| <hr/> | | |
| REVISION | : | S1 |
| <hr/> | | |

| PE/RD | QA | MFG |
|---|----|-----|
| <p style="font-size: 1.2em; font-family: cursive;">Wen yuan Chang</p> <p>Wen yuan Chang</p> | | |
| <p><i>16-Nov-16</i></p> | | |

NOTE:

(1)The green product standard set by TXC is based upon the international standards. Related information is publicly described on the TXC's Website, and updated regularly. The document is compliant with the latest green product quality system directives at the time.

(2)Revision "Sx" is for engineering samples only. PE/RD's approval required.

(3)Revision "Ax" is production ready. PE, QA and MFG's approval required

MSL:Level 1
RoHS Compliant

(for glass crystal only : Pb used in sealing glass material is exempt from EU directive)

Spec Sheet Contents

| No. | Content | Page |
|-----|---|-------|
| 1 | ELECTRICAL SPECIFICATIONS | P.3 |
| 2 | DIMENSIONS | P.4 |
| 3 | MARKING | P.4 |
| 4 | FACTORY LOCATION | P.4 |
| 5 | SUGGESTED REFLOW PROFILE& MANUAL SOLDER CONDITION | P.4 |
| 6 | STRUCTURE ILLUSTRATION | P.5 |
| 7 | EMBOSS CARRIER TAPE & REEL | P.6 |
| 8 | PACKING | P.7 |
| 9 | RELIABILITY SPECIFICATIONS | P.8~9 |

■ ELECTRICAL SPECIFICATIONS
Standard atmospheric conditions

Unless otherwise specified, the standard range of atmospheric conditions for making measurement and tests are as follow:

Ambient temperature : 25±5℃
 Relative humidity : 40%~70%

If there is any doubt about the results, measurement shall be made within the following limits:

Ambient temperature : 25±3℃
 Relative humidity : 40%~70%

Measure equipment

Electrical characteristics measured by S&A 250B or equivalent.

Crystal cutting type

The crystal is using AT CUT (thickness shear mode).

Unit Weight:

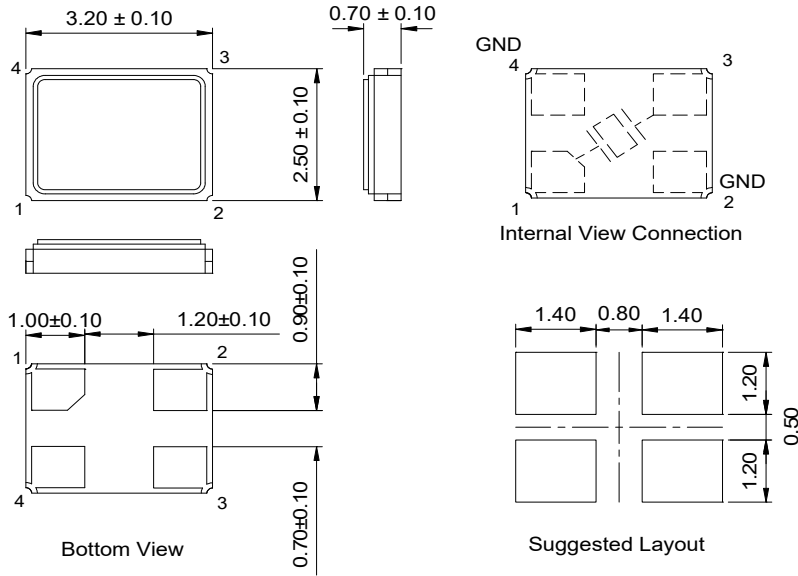
0.017±0.002 g/pcs

| | Parameters | SYM. | Electrical Spec. | | | | Notes |
|----|---------------------------|------|------------------|------|-----|-------|---|
| | | | MIN | TYPE | MAX | UNITS | |
| 1 | Nominal Frequency | FL | 26.000000 | | | MHz | - |
| 2 | Oscillation Mode | - | Fundamental | | | - | - |
| 3 | Load Capacitance | CL | 8 | | | pF | - |
| 4 | Frequency Tolerance | - | ±10 | | | ppm | at 25 °C ± 3 °C |
| 5 | Frequency Stability | - | ±50 | | | ppm | Over Operating Temp. Range (Reference 25°C) |
| 6 | Operating Temperature | - | -40 | ~ | 125 | °C | - |
| 7 | Aging | - | ±3 | | | ppm | 1st Year |
| 8 | Drive Level | DL | - | 10 | 100 | μW | - |
| 9 | Effective Resistance Rr | Rr | - | - | 80 | Ω | - |
| 10 | Shunt Capacitance C0 | C0 | - | - | 3 | pF | - |
| 11 | Insulation Resistance | - | 500 | - | - | MΩ | at DC 100V |
| 12 | Storage Temperature Range | - | -40 | ~ | 125 | °C | - |

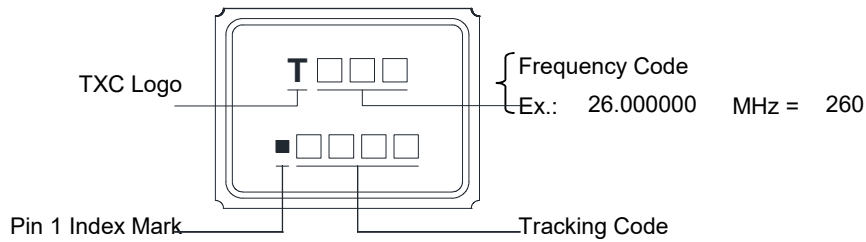
■ DIMENSIONS

(Unit:mm)

Unit:mm



■ MARKING

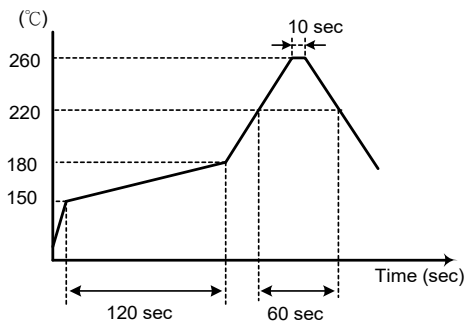


Production Location:China(Ningbo)

■ SUGGESTED REFLOW PROFILE

Solder melting point : 220 ± 10 °C, 60 sec. Min.

Peak Temperature: 260 ± 5 °C, 10 sec. Max.



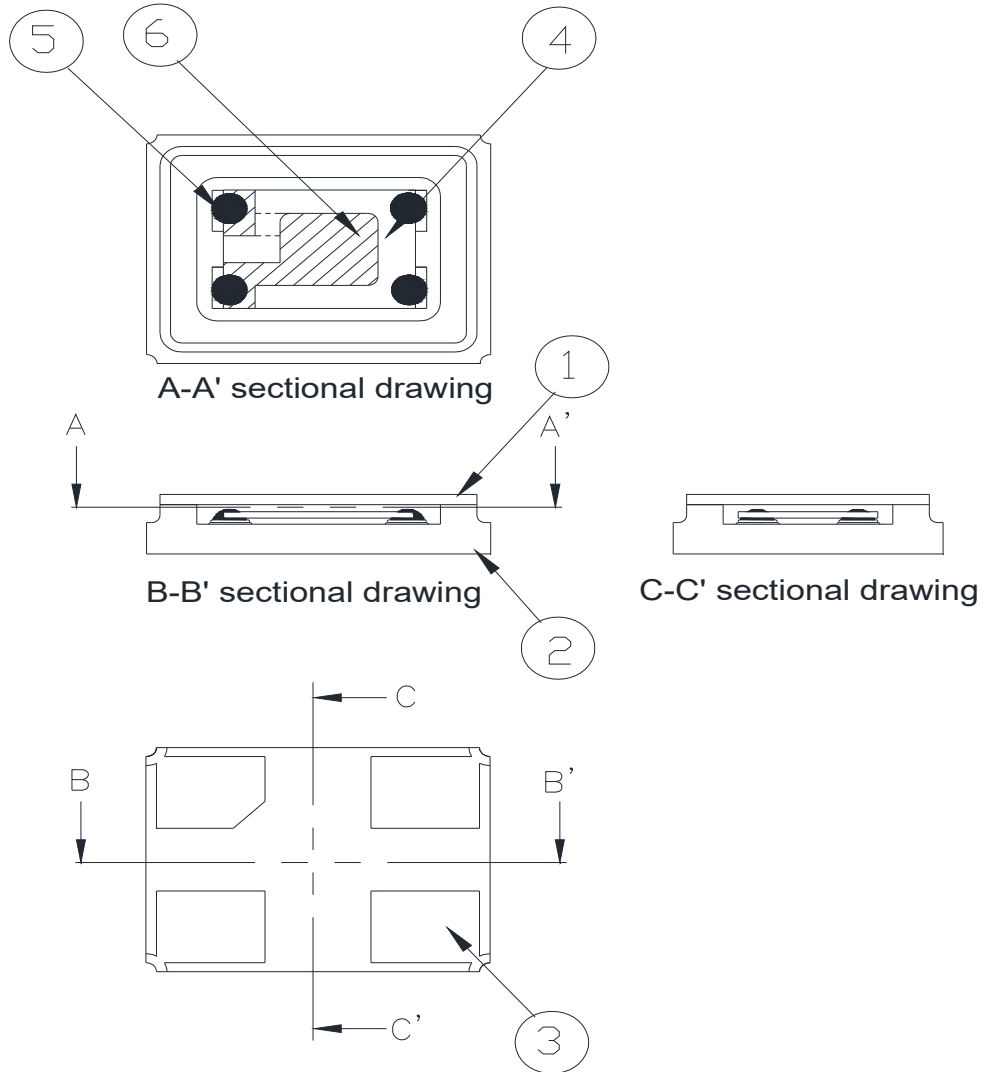
■ SUGGESTED MANUAL SOLDER CONDITION

Temperature: 350 ± 10 °C

Time: 3 sec.

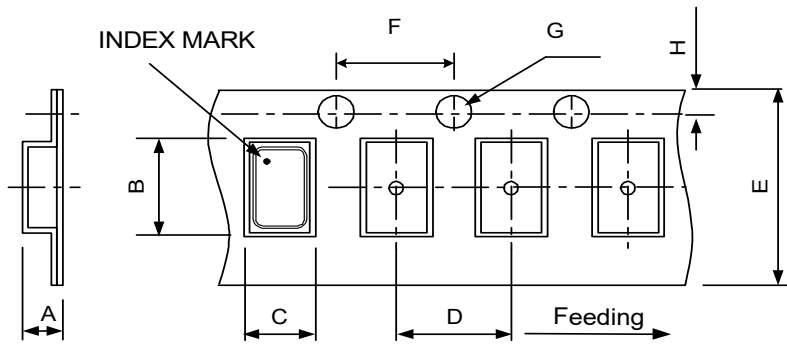
Re-solder times: twice

■ STRUCTURE ILLUSTRATION

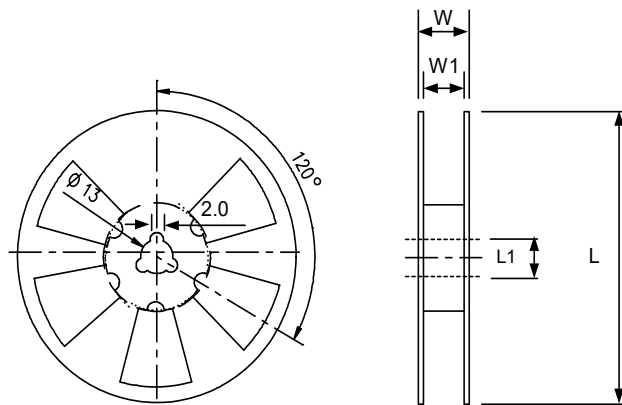
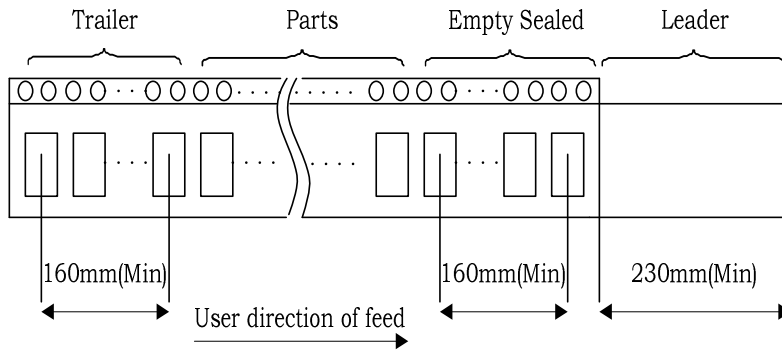


| NO | COMPONENTS | MATERIALS | FINISH/SPECIFICATIONS |
|----|---------------------|---|---|
| 1 | Lid | Kovar (Fe/Co/Ni) | - |
| 2 | Package | Ceramic (Al ₂ O ₃) + Kovar (Fe/Co/Ni)+ Ag/Cu | - |
| 3 | PAD | Au | Tungsten metalize + Ni plating + Au plating |
| 4 | Crystal blank | SiO ₂ | - |
| 5 | Conductive adhesive | Resin+Ag | Silicon resin |
| 6 | Electrode | Noble Metal | - |

■ PACKING



| DIMENSIONS | A | B | C | D | E | F | G | H | (UNIT : mm) |
|------------|---|-----------|-----------|-----------|-----------|-----------|-----------|-----------|-------------|
| | | 1.65±0.01 | 3.40±0.01 | 2.70±0.01 | 4.00±0.01 | 8.00±0.02 | 4.00±0.01 | 1.50±0.01 | |



| DIMENSIONS | L | L1 | W | W1 | pcs / Reel (UNIT : mm) |
|------------|---|---------|--------|----------|------------------------|
| | | 178±1.0 | 13±0.5 | 11.5±0.2 | 8±0.1 |

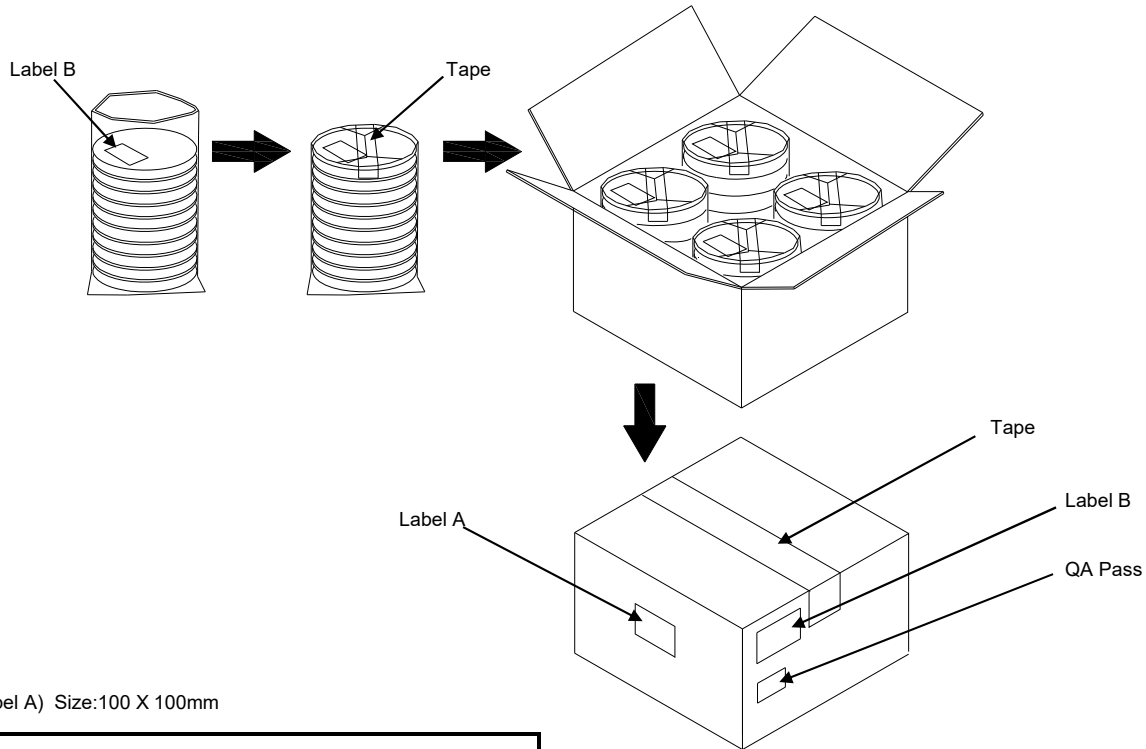
PACKING

Reel Quantity :

- 1. Reel X 6 (6 Reels)
- 2. Reel X 12 (12 Reels)
- 3. Reel X 25 (12 Reels + 13 Reels)
- 4. Reel X 50 (12 Reelsx2 + 13 Reelsx2)

Box Size:

- 1. L200 X W200 X H140mm
- 2. L200 X W200 X H250mm
- 3. L400 X W200 X H250mm
- 4. L400 X W400 X H280mm



(Label A) Size:100 X 100mm

| | |
|---------------------------------|-----------------|
| <h1 style="margin: 0;">TXC</h1> | |
| Inv No: | 00096815 |
| Po No: | 21106326- 24- 1 |
| Part No: | □□□□□□□□ |
| Q'ty: | 40000 PCS |
| C/No: | 157- 44 |

(Label B) Size:80 X 40mm

| | | |
|-----------------|-------------|------------|
| TXC CORPORATION | | QA PASS |
| DATE CODE: | QTY: | 2011/09/02 |
| LOT NO: | RoHS | |
| PART NO: | HF | |
| FREQ: | | |

[STORAGE]

- 1. Don't be caught in the rain.
- 2. The storage environment shall be 5°C ~40°C temperature and 30% ~ 75%RH humidity and free from the sun shine.
- 3. If customers have special requirements, we can paste labels according to it.

■ RELIABILITY SPECIFICATIONS (AEC-Q200 Compliant)

1.Mechanical Endurance

| No. | Test Item | Test Methods | Test Criteria |
|-----|-------------------|---|---------------|
| 1 | Mechanical Shock | 2000 G , 0.3 m Sec. ,3 times for all 3 directions. | B C |
| 1 | Vibration | Frequency range 10 ~ 2000 Hz Acceleration 20G Amplitude 1.52mm Sweep time 20 minute Pendicular axes each test time 4 hours (Total test time 12 hours) | B C |
| 1 | Terminal Strength | 17.7N force for 60sec +/-1sec. | F |
| 1 | Board Flex | Duration time:60 Sec Minimum,Deviation:3mm | B C |
| 2 | Solderability | Temperature 245 °C +/- 5°C Immersing depth 0.5 mm minimum Immersion time 5 +/- 0.5 seconds Flux Rosin resin methyl alcohol solvent (1 : 4) | E |

2.Environmental Endurance

| No. | Test Item | Test Methods | SPEC |
|-----|------------------------------|--|------|
| 2 | Resistance To Soldering Heat | Test temperature 260 +/- 5 °C Test time 10 +/- 1 sec. | BCD |
| 2 | High Temp. Storage | + 125°C ± 3 °C for 1000 ± 12 Hrs | BCD |
| 2 | Low Temp. Storage | - 40 °C ± 3 °C for 1000 ± 12 Hrs | BCD |
| 2 | Temperature cycle | -40°C~125°C,for 1000 cycles. | BCD |
| 3 | Operational Life | 1000 hrs @ 125± 3°C. Rated VDD applied with 1 MΩ. | BCD |
| 3 | High Temp & Humidity | 85°C ± 3°C , RH 85% , 1000 Hrs | BCD |

RELIABILITY SPECIFICATIONS

| Specifications | |
|----------------|--|
| A | Frequency change: Within ± 5 ppm or in customer's specification. |
| B | Frequency change: Within ± 10 ppm or in customer's specification. |
| C | Equivalent series resistance(E.S.R) change: Within $\pm 15\%$ or 10Ω (larger value). |
| D | After conditioning , quartz crystal units shall be subjected to standard atmospheric conditions for 24 hour, and measured. |
| E | Minimum 95% of immersed terminal shall be covered with new uniform solder. |
| F | No damage on specimen |

Measurement condition

Electrical characteristics measured by S&A250B or equivalent.