

Product Features

1. Output Frequency : 1 ~ 204MHz
2. Frequency Stability : ± 50 ppm
3. Supply Voltage : 3.3V
4. Operating Temperature : -40~105°C
5. Output Type : CMOS
6. Phase Jitter : 1ps (Max.) @100MHz , 3.3V
7. RoHS and REACH Compliant , Pb-free , Halogen-free
8. Fast Delivery
9. Wide pull range and good linearity.
10. Industry Standard Package :
7.0 x 5.0 x 1.3 mm

Application :

- SDH/ SONET, Ethernet, Base Stations, etc.



Test condition
Ambient temperature : $25 \pm 5^\circ\text{C}$
Relative humidity : 40% ~ 70%

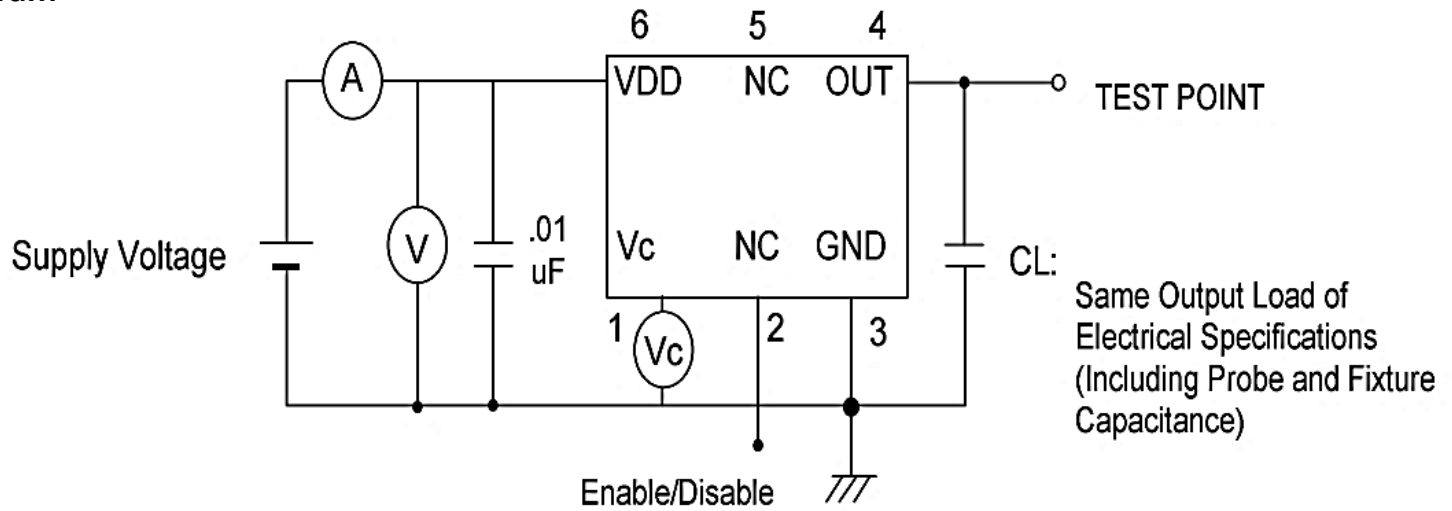
● Table 1 . Electrical Specifications

Parameters	Symbol	Min.	Typ.	Max.	Units	Notes
Nominal Frequency	F	1 ~ 204			MHz	
Frequency Tolerance	FT	± 50			ppm	@ -40~105°C , Note 1
Operating Temperature	Topr	-40	25	105	°C	
Supply Voltage	Vdd	3.3 ($\pm 10\%$)			V	
Current Consumption	Icc	-	-	40	mA	
Nominal Control Voltage	-	0.5 x Vdd				
Control Voltage Range	Vc	0~Vdd			V	
Standby Current	Icc(ST)	-	-	10	uA	OE = Low
Output Load : CMOS	CL	15			pF	
Output Voltage High	VoH	90%Vdd	-	-	V	
Output Voltage Low	VoL	-	-	10%Vdd	V	
Rise Time / Fall Time	Tr / Tf	-	-	5	ns	10% → 90% Vdd Level
		-	-	4	ns	20% → 80% Vdd Level
Symmetry (Duty ratio)	TH/T	45	~	55	%	
Start-up Time	Tosc	-	-	10	ms	To 90% of Final Amplitude
Output Disable Delay Time	T off	-	-	250	us	
Output Enable Delay Time	T on	-	-	300	us	
Enable Voltage High	VIH	70%Vdd	-	-	V	
Disable Voltage Low	VIL	-	-	30%Vdd	V	
APR	APR	± 50	-	-	ppm	Note2
Linearity	-	-	-	10	%	
Aging	-	± 3			ppm/yr.	1st. Year at 25°C
RMS Phase Jitter	PJ	-	-	1.0	ps	40MHz~200MHz @ 12KHz ~ 20MHz

Note 1: Inclusive of frequency tolerance at 25°C , variation over temperature, supply voltage variation, aging and vibration.

Note 2 : APR=(Pull Range) - (Frequency tolerance at 25 °C , variation over temperature, supply voltage variation, and aging.)

● **Test Diagram**



Note : OE terminal is open connection except OE function test.

● **Dimensions & Footprint (Recommended)**

Unit : mm

