

Features

- Fundamental solution.
- 3.3V and 2.5V operation available.
- LVPECL output, output frequencies 25 MHz to 200 MHz.
- Excellent low phase noise and jitter.
- Tri-state function available.
- Applications : Fibre Channel, Gigabit Ethernet, Serial ATA, Serial Attached SCSI, PCI-Express, SDH/SONET.
- RoHS compliant / Pb Free.

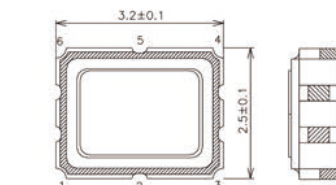


Electrical Specifications

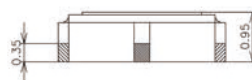
Item / Type	EAS3225P-P
Output Type	LVPECL
Output Load	50 Ω
Oscillation Mode	Fundamental
Supply Voltage (VDD)	2.5V,3.3V
Frequency Range	25 ~ 200 MHz
Overall Frequency Stability *	±20ppm,±50ppm,±100ppm,
Operating Temperature Range	-20~+70 °C, -40~+ 85 °C, or specify
Storage Temperature Range	-55~+ 125°C
Voltage Vol (Max.) /Voh (Min.)	VDD-1.62 V/VDD- 1.025 V
Rise(Tr)/Fall(Tf) Time(20 %~ 80 %)	1 nS Max.
Supply Current	80 mA Max.
Symmetry	45~55%
Start-up Time	10 mS Max.
Phase Jitter (12 KHz ~ 20 MHz)	1 pS Max.

* Inclusive of frequency tolerance at 25°C, variation over temperature, supply voltage variation, aging and vibration.

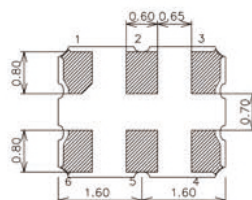
Dimensions



Top View

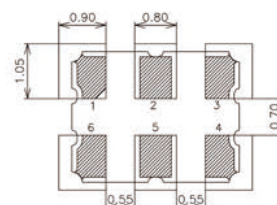


Side View



Bottom View

PAD FUNCTION:
 1: ENABLE CONTROL or NC
 2: ENABLE CONTROL or NC
 3: GND
 4: OUT
 5: OUTN
 6: VDD



Top View Suggested Layout

Units: mm